



# Parts Manual • Ersatzteil Liste

## P2CA Series Hoist/Hoistactor Combination Units

**Additional Parts Manuals Required:**  
Hoist: PL86-P2  
Hoistactor: PL86-TRACTOR



P2 C A 11 L P E L -- A A A 11

**SERIES:** P2

**MOUNTING TYPE:** C = Combination

**FEATURES:**  
A = Standard Unit P = Epoxy Paint  
E = Edible Grease R = Epoxy Paint/Edible Grease  
H = H Temp Grease S = Epoxy Paint/Hi Temp Grease

**CAPACITY:**  
10 = 1000 lbs. 22 = 2200 lbs. \* Spark Resistant  
11 = 1100 lbs. 30 = 3000 lbs.\*  
15 = 1500 lbs.\* 44 = 4400 lbs.

**CHAIN TYPE:** L = Link

**CONTROL TYPE:**  
A = Pendant (Combination w/Hoistactor-6LVR)  
P = Pendant (w/Hoistactor-4LVR)  
S = Pendant (Combination w/Axial Motor-6LVR)  
W = Non-Pendant Ready

**CONTROL LENGTH:**  
E = 5 Ft. I = 9 Ft. M = 13 Ft. Q = 17 Ft. U = 21 Ft. Y = 25 Ft.  
F = 6 Ft. J = 10 Ft. N = 14 Ft. R = 18 Ft. V = 22 Ft. Z = None  
G = 7 Ft. K = 11 Ft. O = 15 Ft. S = 19 Ft. W = 23 Ft.  
H = 8 Ft. L = 12 Ft. P = 16 Ft. T = 20 Ft. X = 24 Ft.

**CHAIN OPTIONS:**  
L = Standard Link Q = SR Link  
P = Zinc Plated Link X = No Chain

**CAPACITY RATING (lbs.):**  
03 = 300 (10/11/15) 15 = 1500 (15/22) 31 = 1100 (3)  
05 = 500 (10/11/15) 20 = 2000 (22) 32 = 2200 (3)  
10 = 1000 (10/11/15) 22 = 2200 (22) 40 = 4000 (4)  
11 = 1000 (11/15/22) 30 = 3000 (30/44) 44 = 4400 (4)

**VINTAGE:**  
A

**LOWER HOOK:**  
A = Standard Link (11/22) F = SR Bullard Link (30)  
B = Bullard Link (11/22) G = Standard Link (44)  
C = SR Standard (10/15) H = Bullard Link (44)  
D = SR Bullard (10/15) X = No Hook  
E = SR Standard Link (30)

**TRACTOR TROLLEY:**  
A = 3-5.25" Std. Speed Tapered (11/22/44) M = 5-7" Std. Speed Tapered (11/22/44)  
B = 3-5.25" Std. Speed Flat (11/22/44) N = 5-7" Std. Speed Flat (11/22/44)  
C = 3-5.25" Std. Speed SR Tapered (10/15/30) O = 5-7" Std. Speed SR Tapered (10/15/30)  
D = 3-5.25" Std. Speed SR Flat (10/15/30) P = 5-7" Std. Speed SR Flat (10/15/30)  
E = 3-5.25" Slow Speed Tapered (11/22/44) Q = 5-7" Slow Speed Tapered (11/22/44)  
F = 3-5.25" Slow Speed Flat (11/22/44) R = 5-7" Slow Speed Flat (11/22/44)  
G = 3-5.25" Slow Speed SR Tapered (10/15/30) S = 5-7" Slow Speed SR Tapered (10/15/30)  
H = 3-5.25" Slow Speed SR Flat (10/15/30) T = 5-7" Slow Speed SR Flat (10/15/30)  
I = 3-5.25" High Speed Tapered (11/22/44) U = 5-7" High Speed Tapered (11/22/44)  
J = 3-5.25" High Speed Flat (11/22/44) V = 5-7" High Speed Flat (11/22/44)  
K = 3-5.25" High Speed SR Tapered (10/15/30) W = 5-7" High Speed SR Tapered (10/15/30)  
L = 3-5.25" High Speed SR Flat (10/15/30) Y = 5-7" High Speed SR Flat (10/15/30)

**AMOUNT OF LIFT:**  
-- Specify Length in Feet, 3 digits  
Example: 10' lift = 010

Note: Numbers in parentheses following an option, represent the hoist capacities for which that option is available.



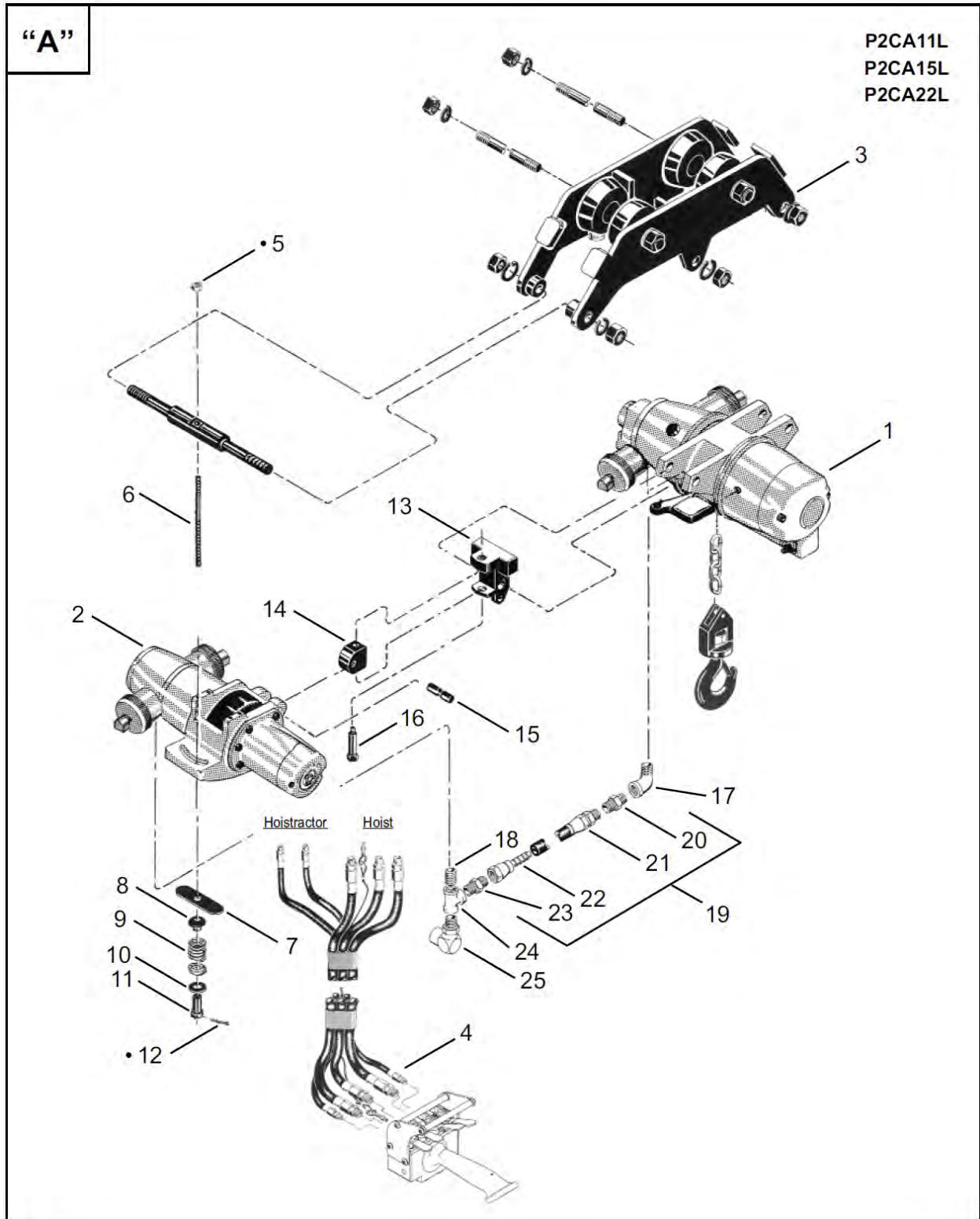


## Table of Contents

P2CA Hoist/Hoistractor Combination .....	1
P2CA Hoist/Hoistractor Combination (parts) .....	2
Trolley Assembly .....	3
Trolley Assembly (parts) .....	4
P2CA Hoist/Hoistractor Combination A .....	5
P2CA Hoist/Hoistractor Combination A (parts) .....	6
P2CA Hoist/Hoistractor Combination B .....	7
P2CA Hoist/Hoistractor Combination B (parts) .....	8
P2CA Pendant Control .....	9
P2CA Pendant Control (parts).....	10
Service Notes 1-4 .....	11
Lifting-Lower Speed Tables .....	12
Lifting-Lower Speed Tables .....	13



## P2CA Hoist/Hoistractor Combination



## P2CA Hoist/Hoistractor Combination (parts)

### Illustration "A" - Hoist/Hoistractor Combination

Index	Number	#	·	EN	DE	FR	ES	IT
				Description	Benennung	Designation	Descripción	Descrizione
1	Note 1	1		Hoist	Hebewerke	Appareils de levage	Montacargas	Paranchi
2	Note 2	1		Hoistractor	Hoistractor	Hoistractor	Hoistractor	Hoistractor
3	Table "B"	1		Trolley Assembly	Wagen	Trolley	Trole	Carrello
4	Note 3	1		Pendent Control	Fernschaltung	Télécommande	El Mando a distancia	Il Comando a distanza
5	C104	1	2	Nut	Mutter	Ecrou	Tuerca	Dado
6	513178	1		Stud	Bolzen	Goujon	Espárrago	Perno sporgente
7	Table "A"	1		Plate	Platte	Plaque	Placa	Piattello
8	Table "A"	1		Washer	Scheibe	Rondelle	Arandela	Rondella
9	Table "A"	1		Spring	Druckfeder	Ressort	Resorte	Molla
10	W178	1		Washer	Scheibe	Rondelle	Arandela	Rondella
11	60145	1		Nut	Mutter	Ecrou	Tuerca	Dado
12	P101D	1	2	Pin	Stift	Goupille cylindrique	Pasador	Spina
13	536317	1		Mounting Adapter	Zwischenstück	Adaptateur	Adaptador	Adattatore
14	513176	1		Adapter	Zwischenstück	Adaptateur	Adaptador	Adattatore
15	513177	1		Pin	Stift	Goupille cylindrique	Pasador	Spina
16	B141D	1		Screw	Schraube	Vis	Tornillo	Vite
17	F583	1		Pipe Elbow	Ellbogen	Coude	Codo	Curva
18	F516	1		Pipe Nipple	Nippel	Mamelon	Niple	Nipplo
19	515436	1		Hose Assembly	Schlauchbaugruppe	Assemblage de tuyau	Ensamblaje de manguera	Insieme tubo flessibile
20	506134	1		Hose Adapter	Zwischenstück	Adaptateur	Adaptador	Adattatore
21	506141	1		Hose	Schlauch	Tuyau	Manguera	Tubo
22	506133	2		Swivel	Drehbar	Emerillon	Eslabón giratorio	Molinello
23	506135	1		Hose Adapter	Zwischenstück	Adaptateur	Adaptador	Adattatore
24	F578	1		Pipe Tee	T-Stück	Té	Tubo en T	Derivazione a T
25	511018	1		Swivel	Drehbar	Emerillon	Eslabón giratorio	Molinello

#) Quantity / Stückzahl / Quantité / Cantidad / Quantità

· Recommended Spare Parts / Kennzeichnet empfohlenes / Identifica un particolare di ricambio raccomandato / Designa el repuesto recomendado / Indique la pièce de rechange conseillée

Note 1: PL86-P2 Parts Manual

Note 2: PL86-TRACTOR Parts

Manual Note 3: Illustration "E"

Table "A"

Index	Description	Rubber Wheel Drive Hoistractor		Sprocket Drive Hoistractor	
		Qty.	P2CA11L P2CA15L P2CA22L	Qty.	P2CA11L P2CA22L
7	Plate	1	509130	1	517503
8	Washer	1	60144	1	517504
9	Spring	1	515392	1	513179

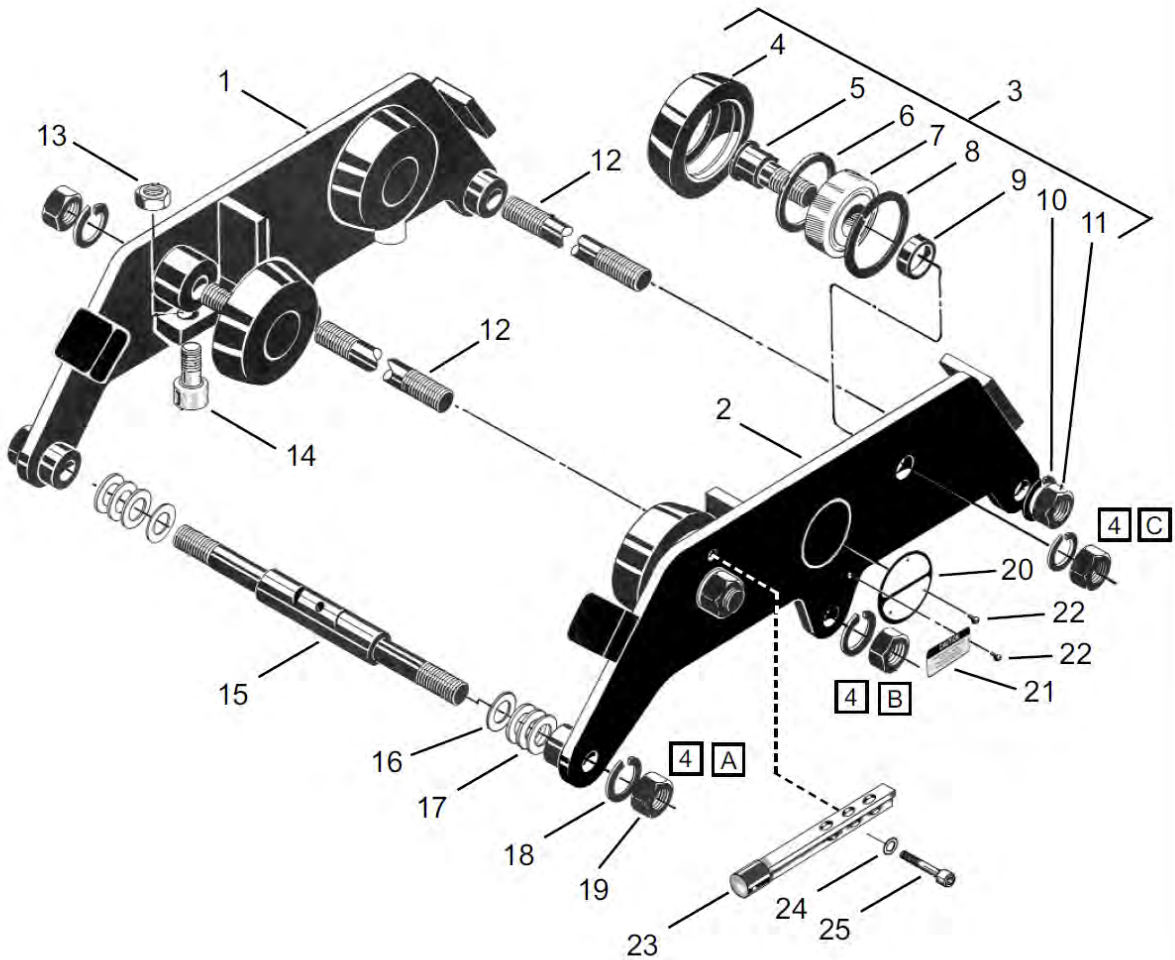


## Trolley Assembly

**"B"**

3" - 5.25" (76-159mm) Flange Width

P2CA11L  
P2CA15L  
P2CA22L



**4** See Service Notes



## Trolley Assembly (parts)

Index	Number	#	·	EN	DE	FR	ES	IT
				Description	Benennung	Designation	Descripción	Descrizione
1	Table "B"	1		Side Plate - Right	seitliche Platte	Plaque de serrage	Placa lateral	Piastra laterale
2	Table "B"	1		Side Plate - Left	seitliche Platte	Plaque de serrage	Placa lateral	Piastra laterale
3	Table "B"	4		Wheel Assembly	Radbaugruppe	Assemblage de roue	Ensamblaje de rueda	Gruppo mole
4	Table "B"	4		Wheel	Rad	Roue	Rueda	Mola
5	512555	4		Axle	Achse	Axis	Eleje	L'asse
6	Table "B"	4		Spacer	Distanzstück	Entretoise	Espaciador	Distanziale
7	20720	4		Bearing	Lager	Coussinet	Cojinete	Cuscinetto
8	800124	4		Retaining Ring	Sicherungsring	Anneau de fixation	Anillo de retención	Anello di fissaggio
9	504495	4		Spacer	Distanzstück	Entretoise	Espaciador	Distanziale
10	W202	4		Washer	Scheibe	Rondelle	Arandela	Rondella
11	C106G	4		Nut	Mutter	Ecrou	Tuerca	Dado
12	513187	2		Stud	Bolzen	Goujon	Espárrago	Perno sporgente
13	C101J	4		Nut	Mutter	Ecrou	Tuerca	Dado
14	Table "B"	4		Cam Follower	Rolle	Rouleau	Cilindro	Rullo
15	513188	1		Stud	Bolzen	Goujon	Espárrago	Perno sporgente
16	504810	6		Washer	Scheibe	Rondelle	Arandela	Rondella
17	Table "B"	--		Washer	Scheibe	Rondelle	Arandela	Rondella
18	W183	6		Washer	Scheibe	Rondelle	Arandela	Rondella
19	C105B	6		Nut	Mutter	Ecrou	Tuerca	Dado
20	Table "B"	2		Capacity Plate	Kapazitaetsschild	Plaque signalétique	Placa de capacidad	Piattello capacitivo
21	530336	2		Caution Label	Aufkleber	Etiquette	Etiqueta	Etichette
22	534820	10		Screw	Schraube	Vis	Tornillo	Vite
23	Table "B"	4		Bumper	Stoßstange	Pare-chocs	Los parachoques	Il paraurti
24	Table "B"	8		Washer	Scheibe	Rondelle	Arandela	Rondella
25	Table "B"	8		Screw	Schraube	Vis	Tornillo	Vite

### Illustration "B" - Trolley Assembly

#) Quantity / Stückzahl / Quantité / Cantidad / Quantità

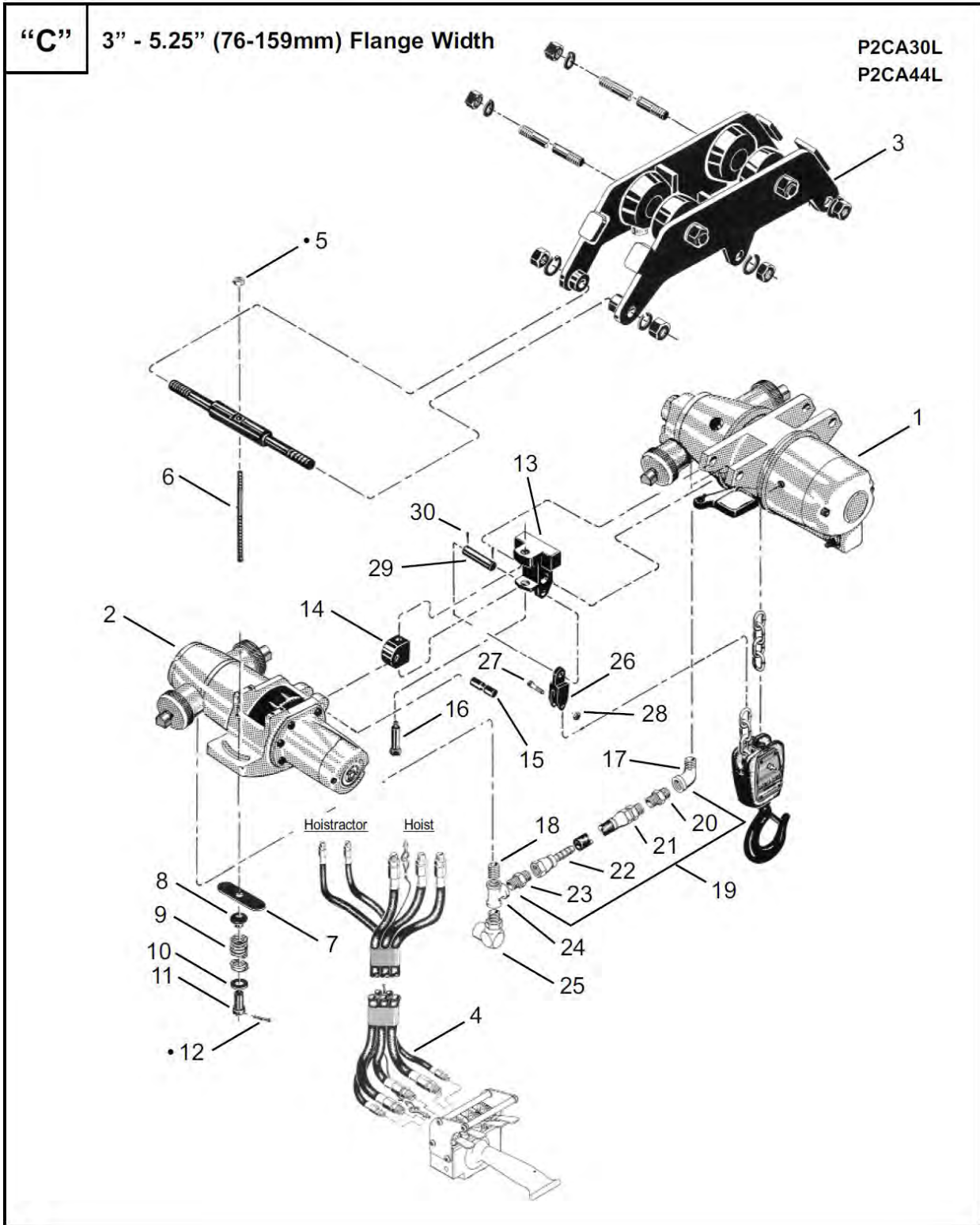
· Recommended Spare Parts / Kennzeichnet empfohlenes / Identifica un particolare di ricambio raccomandato / Designa el repuesto recomendado / Indique la pièce de rechange conseillée

Table "B"

Index	Description	Rubber Wheel Drive Hoistractor						Sprocket Drive Hoistractor	
		P2CA11L		P2CA15L		P2CA22L		P2CA11L	P2CA22L
		Taper Tread	Flat Tread	Taper Tread	Flat Tread	Taper Tread	Flat Tread	Taper Tread	Taper Tread
--	Trolley Assembly	516660	518514	522385	522386	516661	518515	516665	516666
1	Side Plate-Right	512671	512671	519839	519839	512671	512671	512671	512671
2	Side Plate-Left	512673	512673	519840	519840	512673	512673	512673	512673
3	Wheel Assembly	518548	518550	519846	519845	518548	518550	512883	512883
4	Wheel	518547	518549	519837	519838	518547	518549	519396	519396
6	Spacer	---	---	---	---	---	---	512884	812884
14	Cam Follower	807702	807702	519842	519842	807702	807702	807702	807702
17	Washer	504809 (68)	504809 (68)	504809 (54)	504809 (54)	504809 (68)	504809 (68)	504809 (68)	504809 (68)
20	Capacity Plate	532982	532982	19523	19523	529301	529301	532982	529301
23	Bumper	---	---	517446	517446	---	---	---	---
24	Washer	---	---	W150	W150	---	---	---	---
25	Screw	---	---	B125Z	B125Z	---	---	---	---



P2CA Hoist/Hoistractor Combination A



## P2CA Hoist/Hoistactor Combination A (parts)

### Illustration "C" - Hoist/Hoistactor Combination

Index	Number	#	•	EN	DE	FR	ES	IT
				Description	Benennung	Designation	Descripción	Descrizione
1	Note 1	1		Hoist	Hebwerke	Appareils de levage	Montacargas	Paranchi
2	Note 2	1		Hoistactor	Hoistactor	Hoistactor	Hoistactor	Hoistactor
3	Table "B"	1		Trolley Assembly	Wagen	Trolley	Trole	Carrello
4	Note 3	1		Pendent Control	Fernschaltung	Télécommande	El Mando a distancia	Il Comando a distanza
5	C104	1	2	Nut	Mutter	Ecrou	Tuerca	Dado
6	513178	1		Stud	Bolzen	Goujon	Espárrago	Perno sporgente
7	Table "A"	1		Plate	Platte	Plaque	Placa	Piattello
8	Table "A"	1		Washer	Scheibe	Rondelle	Arandela	Rondella
9	Table "A"	1		Spring	Druckfeder	Ressort	Resorte	Molla
10	W178	1		Washer	Scheibe	Rondelle	Arandela	Rondella
11	60145	1		Nut	Mutter	Ecrou	Tuerca	Dado
12	P101D	1	2	Pin	Stift	Goupille cylindrique	Pasador	Spina
13	536317	1		Mounting Adapter	Zwischenstück	Adaptateur	Adaptador	Adattatore
14	513176	1		Adapter	Zwischenstück	Adaptateur	Adaptador	Adattatore
15	513177	1		Pin	Stift	Goupille cylindrique	Pasador	Spina
16	B141D	1		Screw	Schraube	Vis	Tornillo	Vite
17	F583	1		Pipe Elbow	Ellbogen	Coude	Codo	Curva
18	F516	1		Pipe Nipple	Nippel	Mamelon	Niple	Nipplo
19	515436	1		Hose Assembly	Schlauchbaugruppe	Assemblage de tuyau	Ensamblaje de manguera	Insieme tubo flessibile
20	506134	1		Hose Adapter	Zwischenstück	Adaptateur	Adaptador	Adattatore
21	506141	1		Hose	Schlauch	Tuyau	Manguera	Tubo
22	506133	2		Swivel	Drehbar	Emerillon	Eslabón giratorio	Molinello
23	506135	1		Hose Adapter	Zwischenstück	Adaptateur	Adaptador	Adattatore
24	F578	1		Pipe Tee	T-Stück	Té	Tubo en T	Derivazione a T
25	511018	1		Swivel	Drehbar	Emerillon	Eslabón giratorio	Molinello
26	507533	1		Adapter	Zwischenstück	Adaptateur	Adaptador	Adattatore
27	20628	1		Screw	Schraube	Vis	Tornillo	Vite
28	C101H	1		Nut	Mutter	Ecrou	Tuerca	Dado
29	24442	1		Pin	Stift	Goupille cylindrique	Pasador	Spina
30	P101C	2		Pin	Stift	Goupille cylindrique	Pasador	Spina

#) Quantity / Stückzahl / Quantité / Cantidad / Quantità

· Recommended Spare Parts / Kennzeichnet empfohlenes / Identifica un particolare di ricambio raccomandato / Designa el repuesto recomendado / Indique la pièce de rechange conseillée

Note 1: PL86-P2 Parts Manual

Note 2: PL86-TRACTOR Parts

Manual Note 3: Illustration "E"

Table "C"

Index	Description	Rubber Wheel Drive Hoistactor		Sprocket Drive Hoistactor	
		Qty.	P2CA30L P2CA44L	Qty.	P2CA44L
7	Plate	1	509130	1	517503
8	Washer	1	60144	1	517504
9	Spring	1	515392	1	513179



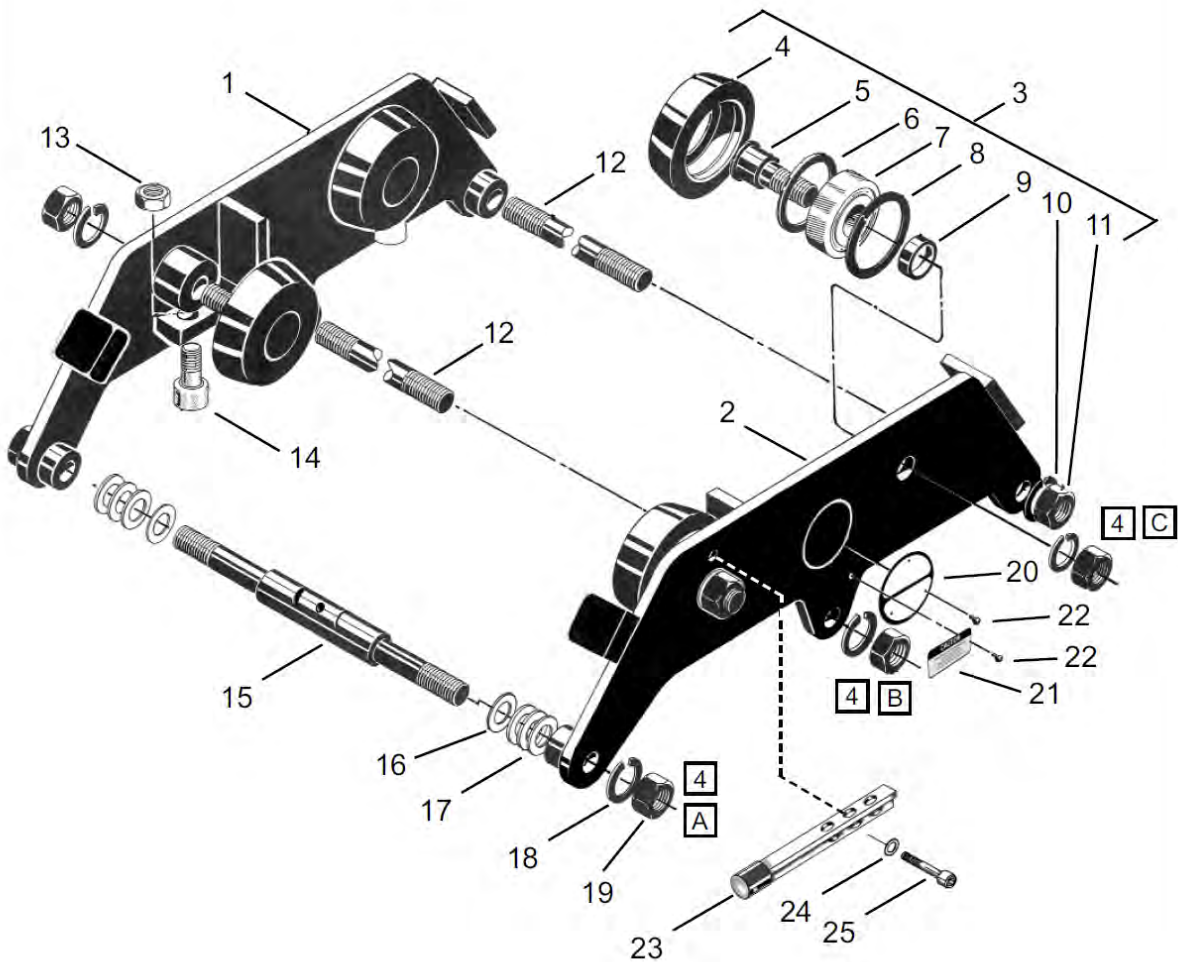


## P2CA Hoist/Hoistractor Combination B

“D”

3" - 5.25" (76-159mm) Flange Width

P2CA30L  
P2CA44L



4 See Service Notes



## P2CA Hoist/Hoistactor Combination B (parts)

### Illustration "D" - Trolley Assembly

Index	Number	#	·	EN	DE	FR	ES	IT
				Description	Benennung	Designation	Descripción	Descrizione
1	Table "D"	1		Side Plate - Right	seitliche Platte	Plaque de serrage	Placa lateral	Piastra laterale
2	Table "D"	1		Side Plate - Left	seitliche Platte	Plaque de serrage	Placa lateral	Piastra laterale
3	Table "D"	4		Wheel Assembly	Radbaugruppe	Assemblage de roue	Ensamblaje de rueda	Gruppo mole
4	Table "D"	4		Wheel	Rad	Roue	Rueda	Mola
5	512555	4		Axle	Achse	Axis	Eleje	Lasse
6	Table "D"	4		Spacer	Distanzstück	Entretoise	Espaciador	Distanziale
7	20720	4		Bearing	Lager	Coussinet	Cojinete	Cuscinetto
8	800124	4		Retaining Ring	Sicherungsring	Anneau de fixation	Anillo de retención	Anello di fissaggio
9	504495	4		Spacer	Distanzstück	Entretoise	Espaciador	Distanziale
10	W202	4		Washer	Scheibe	Rondelle	Arandela	Rondella
11	C106G	4		Nut	Mutter	Ecrou	Tuerca	Dado
12	513187	2		Stud	Bolzen	Goujon	Espárrago	Perno sporgente
13	C101J	4		Nut	Mutter	Ecrou	Tuerca	Dado
14	Table "D"	4		Cam Follower	Rolle	Rouleau	Cilindro	Rullo
15	513188	1		Stud	Bolzen	Goujon	Espárrago	Perno sporgente
16	504810	6		Washer	Scheibe	Rondelle	Arandela	Rondella
17	Table "D"	--		Washer	Scheibe	Rondelle	Arandela	Rondella
18	W183	6		Washer	Scheibe	Rondelle	Arandela	Rondella
19	C105B	6		Nut	Mutter	Ecrou	Tuerca	Dado
20	Table "D"	2		Capacity Plate	Kapazitaetsschild	Plaque signalétique	Placa de capacidad	Piattello capacitivo
21	530336	2		Caution Label	Aufkleber	Etiquette	Etiqueta	Etichette
22	534820	10		Screw	Schraube	Vis	Tornillo	Vite
23	Table "D"	4		Bumper	Stoßstange	Pare-chocs	Los parachoques	Il paraurti
24	Table "D"	8		Washer	Scheibe	Rondelle	Arandela	Rondella
25	Table "D"	8		Screw	Schraube	Vis	Tornillo	Vite

#) Quantity / Stückzahl / Quantité / Cantidad / Quantità

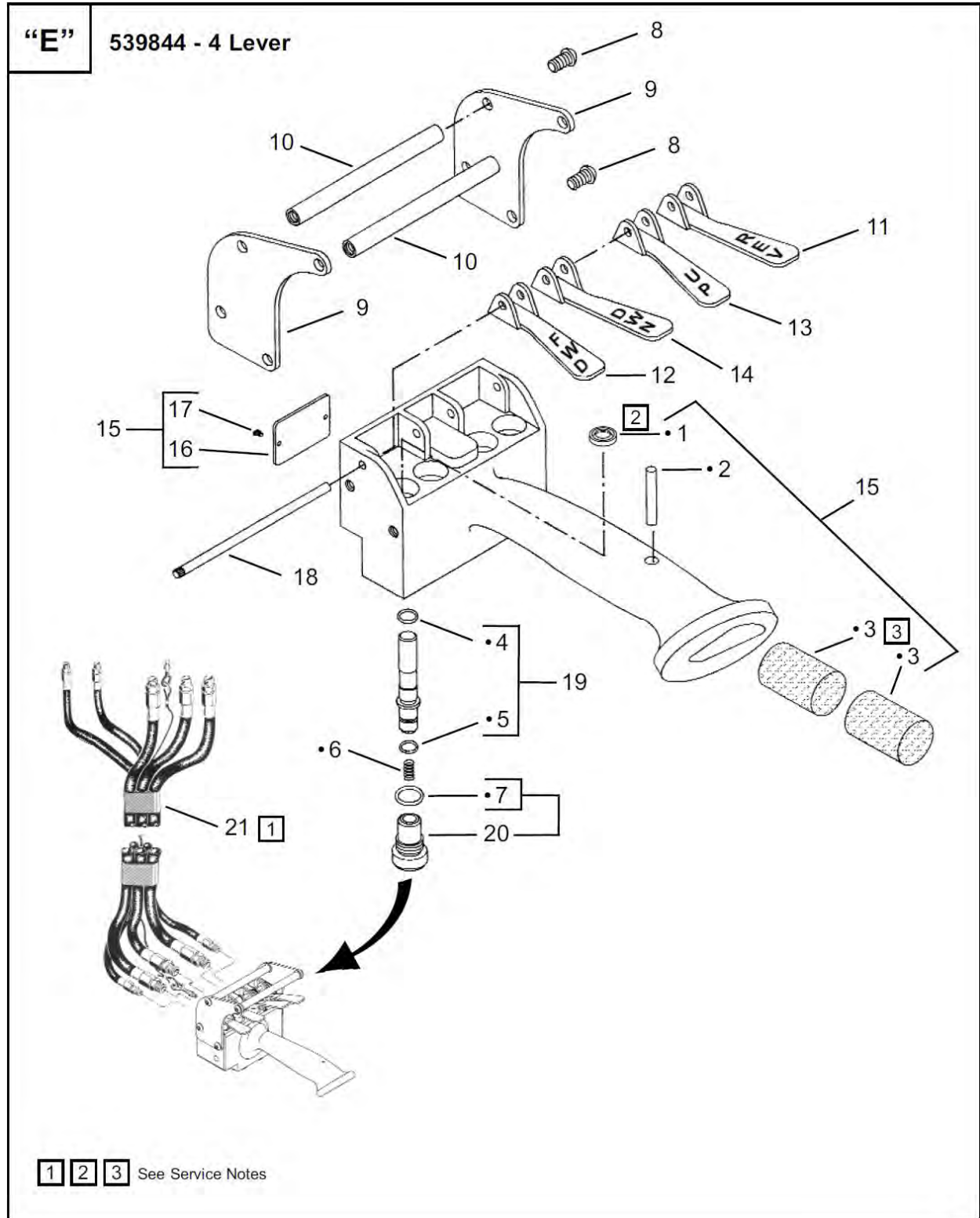
· Recommended Spare Parts / Kennzeichnet empfohlenes / Identifica un particolare di ricambio raccomandato / Designa el repuesto recomendado / Indique la pièce de rechange conseillée

Table "D"

Index	Description	Rubber Wheel Drive Hoistactor				Sprocket Drive Hoistactor	
		P2CA30L		P2CA44L			P2CA44L
		Taper Tread	Flat Tread	Taper Tread	Flat Tread		
--	Trolley Assembly	522387	522388	516662	518516	516667	
1	Side Plate-Right	519839	519839	512671	512671	512671	
2	Side Plate-Left	519840	519840	512673	512673	512673	
3	Wheel Assembly	519846	519845	518548	518550	512883	
4	Wheel	519837	519838	518547	518549	519396	
6	Spacer	---	---	---	---	812884	
14	Cam Follower	519842	519842	807702	807702	807702	
17	Washer	504809 (54)	504809 (54)	504809 (68)	504809 (68)	504809 (68)	
20	Capacity Plate	25993	25993	529302	529302	529302	
23	Bumper	517446	517446	---	---	---	
24	Washer	W150	W150	---	---	---	
25	Screw	B125Z	B125Z	---	---	---	



## P2CA Pendant Control



## P2CA Pendent Control (parts)

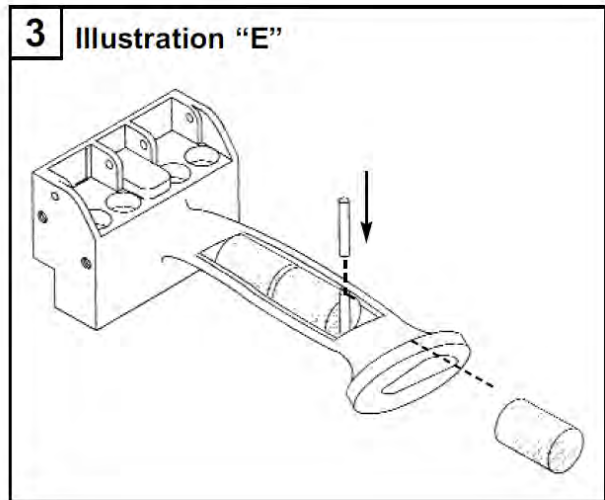
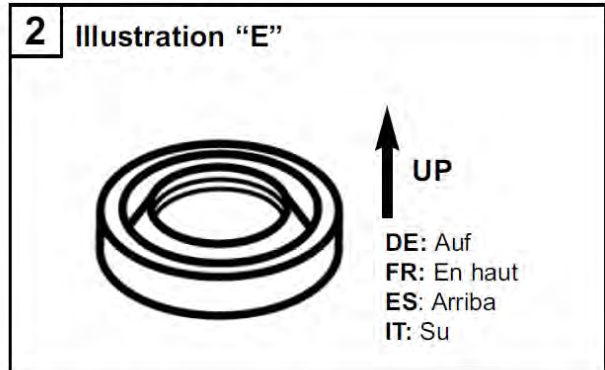
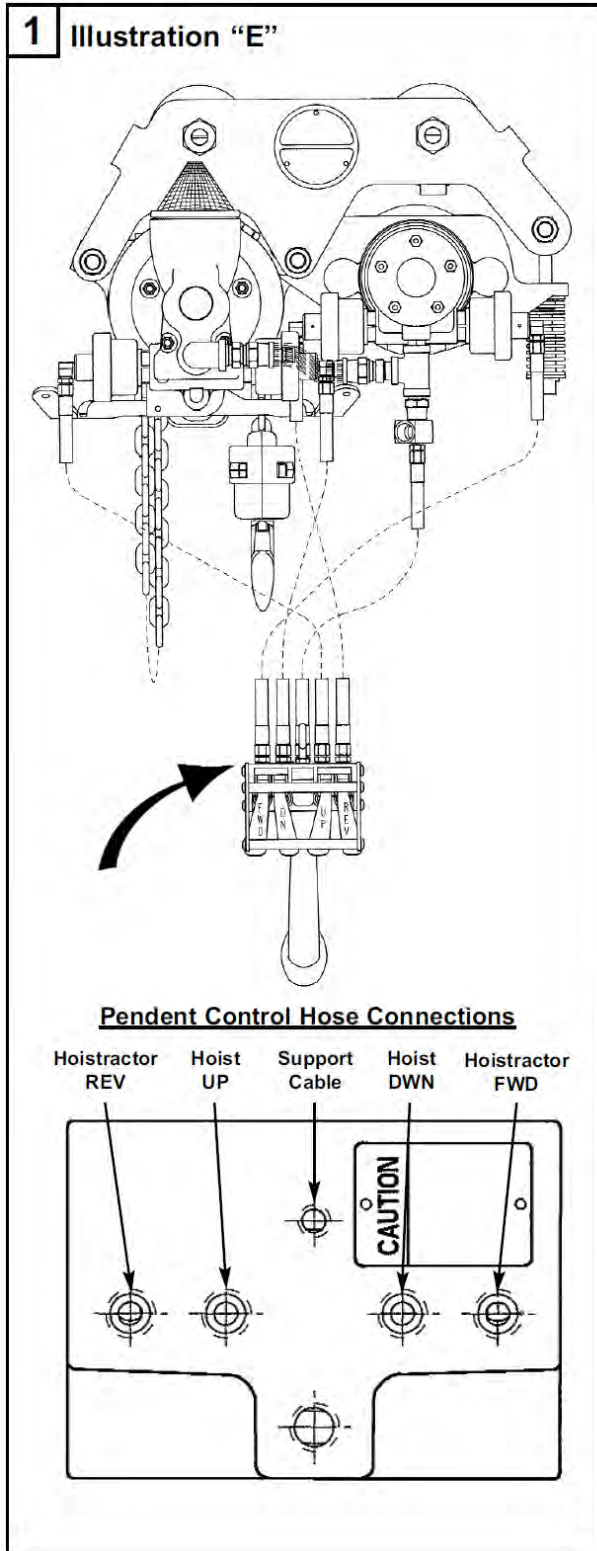
### Illustration "E" - 539844 - 4 Lever Pendent Control Assembly

Index	Number	#	.	EN	DE	FR	ES	IT
				Description	Benennung	Designation	Descripción	Descrizione
1	539714	4	8	Seal	Dichtung	Sceau	Sello	Guarnizione
2	RP103G	1	2	Pin	Stift	Goupille cylindrique	Pasador	Spina
3	531753	2	4	Muffler	Schalldämpfer	Silencieux	Silenciador	Silenziatore
4	504970	4	8	O-Ring	O-Ring	Joint torique	Anillo "O"	Anello ad O
5	1008127	4	8	O-Ring	O-Ring	Joint torique	Anillo "O"	Anello ad O
6	511608	4	8	Spring	Druckfeder	Ressort	Resorte	Molla
7	60351	4	8	O-Ring	O-Ring	Joint torique	Anillo "O"	Anello ad O
8	B126N	8		Screw	Schraube	Vis	Tornillo	Vite
9	539865	2		Side Plate	seitliche Platte	Plaque de serrage	Placa lateral	Piastra laterale
10	539866	2		Spacer	Distanzstück	Entretoise	Espaciador	Distanziale
11	526267	1		Lever (REV)	Hebel (Rückwärts)	Levier (en arrière)	Palanca (hacia atrás)	Leva (indietro)
12	526268	1		Lever (FWD)	Hebel (Vorwärts)	Levier (Avant)	Palanca (Delantero)	Leva (In avanti)
13	526277	1		Lever (UP)	Hebel (Auf)	Levier (En haut)	Palanca (Arriba)	Leva (Su)
14	526278	1		Lever(DWN)	Hebel (Hinunter)	Levier (En bas)	Palanca(Hacia abajo)	Leva (Giù)
15	539412	1		Handle	Handgriff	Poignée	Manija	Impugnatura
16	521768	1		Caution Plate	Achtungsschild	Plaque d'avertissement	Placa de instrucciones	Piastra di protezione
17	534820	2		Screw	Schraube	Vis	Tornillo	Vite
18	539835	1		Pin	Stift	Goupille cylindrique	Pasador	Spina
19	539832	2		Valve	Ventil	Soupape	Válvula	Valvola
20	511610	2		Cap	Kappe	Chapeau	Tapa	Cappello
21	526170	1		Hose (5ft.)	Schlauch (1.5m)	Tuyau (1.5m)	Manguera (1.5m)	Tube (1.5m)
	526171	1		Hose (10ft.)	Schlauch (3.0m)	Tuyau (3.0m)	Manguera (3.0m)	Tube (3.0m)
	526172	1		Hose (15ft.)	Schlauch (4.6m)	Tuyau (4.6m)	Manguera (4.6m)	Tube (4.6m)
	526175	1		Hose (20ft.)	Schlauch (6.1m)	Tuyau (6.1m)	Manguera (6.1m)	Tube (6.1m)
	526176	1		Hose (25ft.)	Schlauch (7.6m)	Tuyau (7.6m)	Manguera (7.6m)	Tube (7.6m)

#) Quantity / Stückzahl / Quantité / Cantidad / Quantità

· Recommended Spare Parts / Kennzeichnet empfohlenes / Identifica un particolare di ricambio raccomandato / Designa el repuesto recomendado / Indique la pièce de rechange conseillée

## Service Notes 1-4



**4**

Illustration	Index Number	Tightening Torque Anzugsmoment Tightening Torque Torsión de Apriete Tightening Torque	
		Ft-Lbs (in-lbs)	Nm
B	19A	70-80	95-108
	19B	40-50	54-68
	19C	40-50	54-68
D	19A	70-80	95-108
	19B	40-50	54-68
	19C	40-50	54-68



## Lifting-Lower Speed Tables

P2CA11...														
Air Pressure		Direction	Load											
			lbs.	kg	lbs.	kg	lbs.	kg	lbs.	kg	lbs.	kg	lbs.	kg
			0	0	200	91	400	181	600	272	800	362.9	1100	499
			Load Speed											
PSI	Kg/CM2		fpm	mpm	fpm	mpm	fpm	mpm	fpm	mpm	fpm	mpm	fpm	mpm
90	6.3	Lift	75	23	65	20	58	18	48	15	43	13	38	12
		Lower	75	23	83	25	94	29	100	31	100	31	107	33
80	5.8	Lift	75	23	62	19	54	17	48	15	41	13	34	10
		Lower	71	22	82	25	94	29	100	31	100	31	107	33
70	4.9	Lift	68	21	58	18	47	14	41	13	33	10	29	9
		Lower	68	21	79	24	88	27	94	29	100	31	100	31
60	4.2	Lift	62	19	48	15	42	13	37	11	29	9	22	7
		Lower	60	18	71	22	83	25	94	29	100	31	100	31
50	3.5	Lift	54	17	44	13	35	11	27	8	20	6	13	4
		Lower	52	16	62	19	68	21	83	25	88	27	94	29
40	2.8	Lift	43	13	34	10	27	8	19	6	12	4	---	---
		Lower	43	13	52	16	65	20	65	20	83	25	---	---

P2CA15...P2CA22...														
Air Pressure		Direction	Load											
			lbs.	kg	lbs.	kg	lbs.	kg	lbs.	kg	lbs.	kg	lbs.	kg
			0	0	400	181	800	363	1200	544	1500	680	2200	998
			Load Speed											
PSI	Kg/CM2		fpm	mpm	fpm	mpm	fpm	mpm	fpm	mpm	fpm	mpm	fpm	mpm
90	6.3	Lift	43	13	36	11	30	9	25	8	23	7	19	6
		Lower	43	13	47	14	50	15	53	16	58	18	56	17
80	5.8	Lift	41	13	34	10	28	9	23	7	21	6	17	5
		Lower	41	13	47	14	50	15	52	16	57	17	55	17
70	4.9	Lift	40	12	32	10	26	8	21	6	19	6	15	5
		Lower	40	12	46	14	49	15	51	16	56	17	54	17
60	4.2	Lift	38	12	29	9	24	7	19	6	16	5	12	4
		Lower	38	12	44	13	47	14	49	15	56	17	54	35
50	3.5	Lift	36	11	26	8	21	6	16	5	12	3.6	---	---
		Lower	36	11	43	13	45	14	48	15	55	16.8	---	---
40	2.8	Lift	32	10	23	7	17	5	12	4	---	---	---	---
		Lower	32	10	39	12	43	13	47	14	---	---	---	---





### Lifting-Lower Speed Tables

P2CA30... P2CA44...																				
Air Pressure		Direction	Load																	
			lbs.	kg	lbs.	kg	lbs.	kg	lbs.	kg	lbs.	kg	lbs.	kg	lbs.	kg	lbs.	kg	lbs.	kg
PSI	Kg/CM2		0	0	500	227	1000	454	1500	680	2000	907	2500	1134	3000	1361	3500	1588	4400	1996
		Load Speed																		
		fpm	mpm	fpm	mpm	fpm	mpm	fpm	mpm	fpm	mpm	fpm	mpm	fpm	mpm	fpm	mpm	fpm	mpm	
90	6.3	Lift	22	6	21	6	19	6	18	6	15	5	14	4	13	4	11	3	10	3
		Lower	24	7	24	7	24	8	25	8	26	8	26	8	26	8	27	8	28	9
80	5.8	Lift	22	7	20	6	18	5	17	5	15	5	13	4	12	4	10	3	9	3
		Lower	23	7	23	7	24	8	25	8	25	8	26	8	26	8	26	8	27	8
70	4.9	Lift	21	6	19	6	17	5	15	5	13	4	12	4	10	3	9	3	7	2
		Lower	21	6	22	7	23	8	25	8	25	8	26	8	26	8	26	8	26	8
60	4.2	Lift	19	6	18	5	16	4	14	4	11	3	10	3	9	3	6	2	----	----
		Lower	20	6	21	7	23	7	24	7	24	7	25	8	26	8	26	8	----	----
50	3.5	Lift	19	6	16	4	14	4	12	4	10	3	8	2	6	2	4	1	----	----
		Lower	18	6	20	7	22	7	23	7	24	7	25	8	26	8	26	8	----	----
40	2.8	Lift	16	5	14	3	11	3	9	3	7	2	5	2	----	----	----	----	----	----





**FOR QUESTIONS, TECHNICAL AND WARRANTY SUPPORT:**

**GD-HOIST**

5215 S. Emmer Dr.  
New Berlin, WI 53151  
Phone: 262-710-4185  
Fax: 262-796-1194  
[www.gdhoist.com](http://www.gdhoist.com)

